

The camera image is subject to varying levels of distortion in some areas and is thus not suitable for estimating distances.

Depending on the equipment, the function can be used when driving forward or reversing.

## Safety note

### WARNING

The system does not relieve you of your personal responsibility to assess the traffic situation correctly. Due to system limits, it cannot respond independently and appropriately in all traffic situations. There is a risk of accident. Adapt your driving style to the traffic conditions. In addition, look directly to check the traffic situation and the vehicle surroundings and intervene actively where appropriate.

## Overview

### Sensors

The system is controlled by the following cameras:

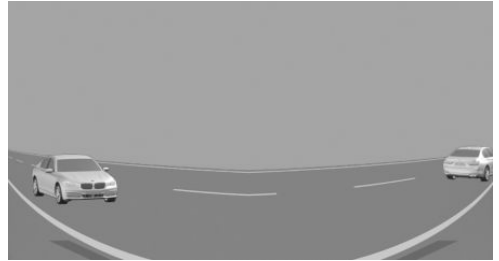
- ▷ Reversing Assist Camera.
- ▷ Depending on the equipment: front camera.

## Turning the panoramic view on/off



1. Press the button.
2. "Panorama view"

## Display



Yellow lines on the screen mask identify the bumpers of your own vehicle.

Depending on the engaged selector lever position, the camera image of the Reversing Assist Camera or front camera will be displayed.

## Functional limitations

The functional limitations of the parking view apply.

For further information:

Parking view, see page [258](#).

## System limits

The limits of the parking view system apply.

For further information:

Parking view, see page [258](#).

## Remote 3D View

### Principle

The BMW app and the camera pictures in the parking view, for example automatic camera perspective, enable the display of the vehicle surroundings on a mobile end device.

The function shows a view of the current situation.

### General

For reasons related to data protection, the function can only be run three times in two hours.

## Overview

### Sensors

The system is controlled by the following cameras:

- ▷ Front camera.
- ▷ Exterior mirror cameras.
- ▷ Reversing Assist Camera.

### Operating requirements

- ▷ Data transfer must be activated.  
Data protection, see page 77.
- ▷ The BMW app must be installed on the mobile device.
- ▷ ConnectedDrive countries: a BMW ID with an existing ConnectedDrive account must be activated.  
BMW ID/driver profiles, see page 78.

### Activating/deactivating Remote 3D View

The function can be activated or deactivated individually or together with other functions.

1. "MENU"
2. "Vehicle apps"
3. "System settings"
4. "Data privacy"
5. Select the desired setting.  
After the activation, Remote 3D View can be accessed in the BMW app.

### System limits of the sensors

For further information:

- ▷ Cameras, see page 48.

### Functional limitations

The system may have restricted functionality or may not be available at all in situations such as the following:

- ▷ With a door or the luggage compartment open. Areas that the system is not able to record are shown dark on the display.
- ▷ If the exterior mirrors have been folded in manually.
- ▷ When other camera functions are being run in the vehicle.
- ▷ The vehicle moves faster than at walking speed.
- ▷ In case of missing or weak Internet connection.

## Park Assist

### Principle

The Parking Manoeuvre Assistant supports driving into and driving out of parallel and bay parking spaces.

The Parking Manoeuvre Assistant Professional increases the comfort and range of uses of the Parking Manoeuvre Assistant. In addition to the parking methods of the Parking Manoeuvre Assistant, parking in parking spaces that are marked with lines is possible.

### Vehicle equipment

This system may not be available in the vehicle in question, for example due to the selected optional equipment, the national-market version or the possibility of subsequent enabling and software updates. This also applies to the individual functions of the system.

For further information:

Vehicle equipment, see page 7.

### General

#### Parking methods

The system supports the following parking methods: